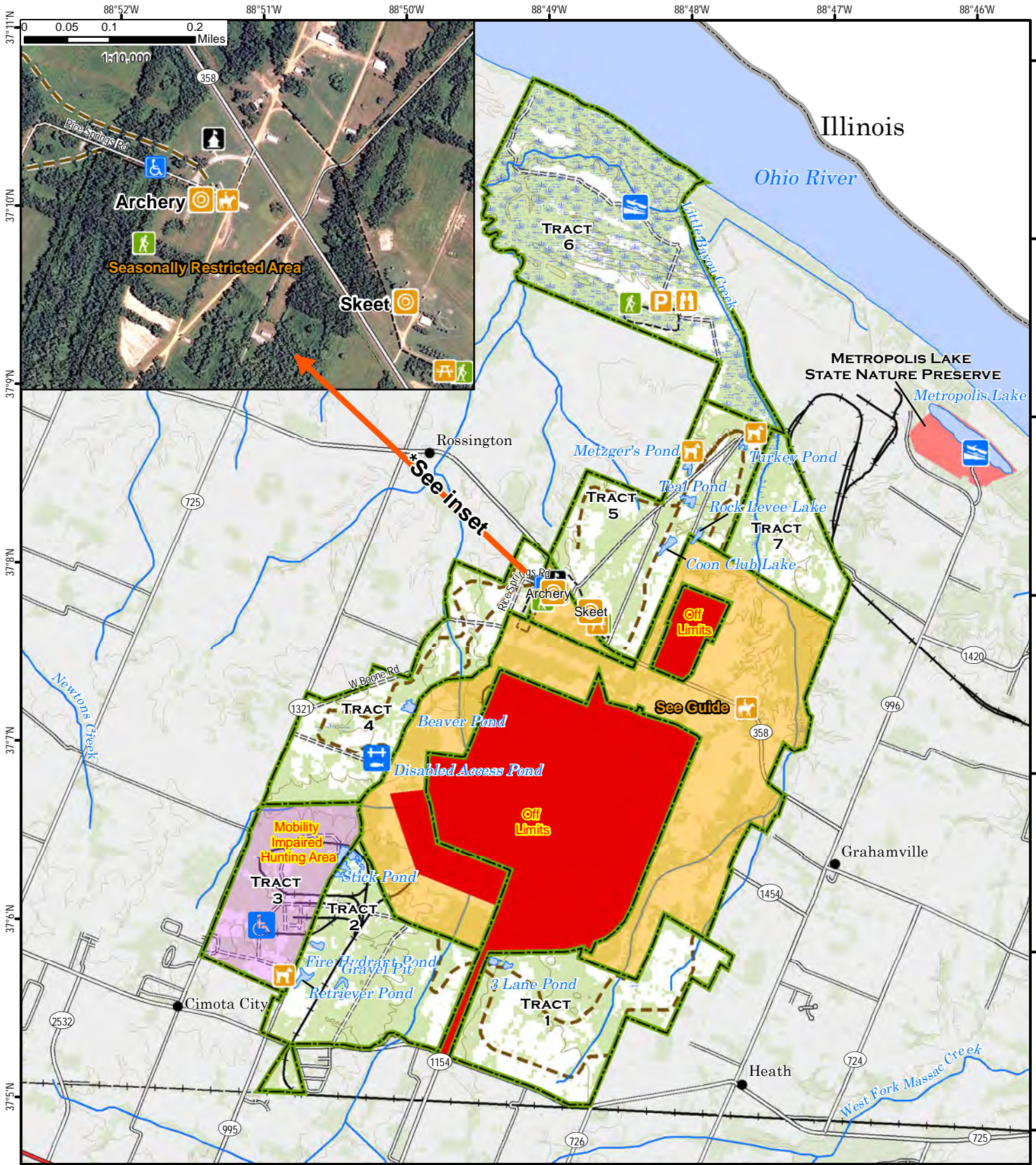


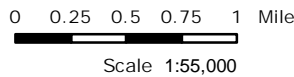
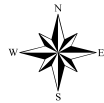


West Kentucky Wildlife Management Area



A map legend and additional information are provided on PDF pages that accompany this map.

Publication Date: 03/12/2012



Contour interval: 40 feet



Note to Map Users

Map prepared by Kentucky Department of Fish & Wildlife Resources (KDFWR). Although KDFWR strives for accuracy, data used to create this map are from a variety of sources and dates; as such, KDFWR makes no representations regarding the accuracy or fitness for use of the information furnished herein.

West Kentucky WMA Information

Public Hunting Area Location



Regional Locator



WMA Overview

Location & Size: McCracken County, 6,560 acres

Contact (270) 488-3233

Elevation minimum 297 feet, maximum 451 feet.

Area Habitat mostly forest: open land 34%, forest 47%, wetland 18%, open water 1%.

Directions & Description: Seven miles from I-24, exit 4, in Paducah, on US 60 in Future City. Turn north on KY 996 for 3.6 miles. Turn west on KY 358 for 2.6 miles to office.

Old fields, woodlots, grasslands, crop fields and food plots. Twelve fishing ponds with access for small boats; picnicking, hiking; kennels and stalls for use during field trials. Horseback riding on designated trails only. National caliber horseback bird dog field trials, retriever field trials, and retriever test hunts are hosted September - May on the WMA. Chief Paduke Skeet Range (Phone (270) 488-3248, web site www.chiefpaduke.com) on KY 358 one-half mile east of office. Archery range (mobility-impaired accessible) with 10-50 yard targets open daily during daylight hours, wildlife viewing areas (Tupelo Swamp), the fishing pier at "Disabled Access Pond" is handicap assessable. For hunting there is mobility impaired access in designated areas to permit holders (Tract 3). Hunable populations of deer, turkey, dove, squirrel, rabbits and quail exist on the area. Special regulations apply for deer, turkey and small game hunting. All vehicular traffic is prohibited on Tract 6 Feb. 1 - April 16. Owned/leased by Kentucky Department of Fish and Wildlife Resources. Trails were put in with the assistance of a National Recreational Trails Fund grant and the Russ Chittenden Woodlands Fund provided funds for materials, signs, tree seedlings, and a large amount of volunteer labor.

For more online information about this public hunting area [click here](#).

Online Resources

Public Hunting Area users must abide by the Kentucky hunting, trapping, and fishing regulations. It is incumbent on persons using Public Hunting Areas to become familiar with these regulations. Kentucky Department of Fish & Wildlife Resources provides these regulations on our Web site at fw.ky.gov or by calling 1-800-858-1549. If you are viewing this as a PDF, clicking on the links below will direct your browser to our regulations and maps.

Guides and Publications

- Spring Turkey and Squirrel Guide
- Waterfowl Guide
- Fishing and Boating Guide
- Spring Turkey and Squirrel Guide
- Hunting Guide for Dove, Wood Duck, Teal, Woodcock, Snipe, and Crow
- Kentucky Hunting and Trapping Guide
- ADA Accessible Hunting Sites
- A Guide to Wildlife Management Areas in Kentucky

Maps and Geographic Information







- [Game Zone – Seasons Maps](#)
- [Wildlife Management Areas/Public Hunting Areas](#)
- [Other KDFWR Maps](#)
- [A Guide to Public Hunting Areas in Kentucky](#)
- [Google Maps – Statewide Public Hunting Area Locations](#)
- [Google Earth Files for Public Hunting Areas, boating and fishing access locations](#)
- [GPS Files for Public Hunting Areas, boating and fishing access locations](#)
- [Interactive Hunting and Fishing Areas Mapper](#)

Wildlife Management Area Map Notes & Legend

NOTE TO MAP USERS:

For most WMA maps the landscape is depicted using a combination of elevation contours, hillshading and a green tint indicating woodland areas that is derived from satellite imagery. On WMAs that are relatively small or have a history of surface mining aerial photography is used.

WMA Map Legend

	WMA Office		WMA Boundary		Populated Place
	Information Kiosk		Aerial photograph		Kentucky Boundary
	Check station		Other Public Hunting Areas		Interstate Highway
	Mobility-impaired Hunting Blind		Elk Hunting Units		Kentucky Parkway
	Trailhead		Area Off Limits		U.S. Highway
	Horseback Trailhead		No Hunting		State Highway
	Parking Lot		Seasonally Restricted Access *		Local Road
	Picnic Area		Mobility Impaired Hunting Area		Forest Service Road
	Restrooms		Primitive Hunting Only		Active Railroad
	Wildlife Viewing Site		Foot Traffic Only		Abandoned Railroad
	Interpretive Site		Open Water		Federal Recreation Trail
	Retriever Training Site		Wetland		State Park Trail
	Gate		Woodland		WMA Road
	Campground				WMA Foot Trail
	Cemetery				WMA Horse Trail
	Corps of Engineers Office				Gas Pipeline
	Waterfowl Blind				Powerline
	Shooting Range				Rivers and Streams
	Established Bank Access				Dam
	Fishing Pier				Trout Waters
	Carrydown Launch				Elevation Contour
	Small Boat Ramp				
	Large Boat Ramp				
	State Park Office				